

Chapter 24 Transferring Recipe Data

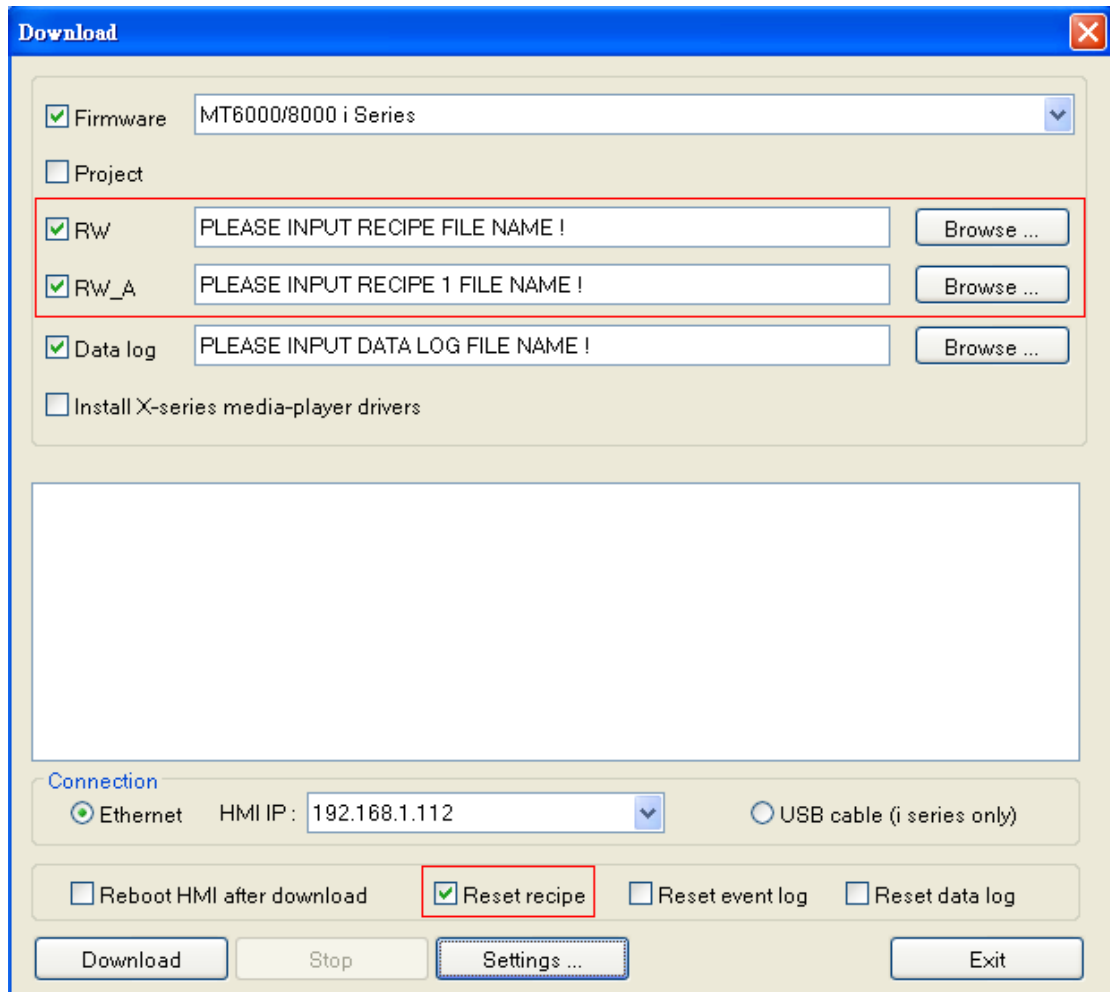
Recipe Data are stored in flash memory. When system startup up, both the RW and RW_A memory will be restore from the recipe data in flash memory, the way of reading and writing Recipe Data is the same as operating the normal Word Register.

The size of Recipe Data in both RW and RW1 are 64k words. User can update Recipe Data by using CF Card, USB cable or Ethernet. It is possible to upload Recipe Data to the designated address of PC; furthermore, it can save the PLC's data in recipe memory. The following explain all of the ways of operating recipe data.

1. Updating Recipe Data by Using Ethernet or USB cable

Click [Download] on Project Manager. Select [RW] and [RW_A] and designate the directory of the source files. After the download operation complete, start up the HMI again, and the contents of RW and RW_A will be updated.

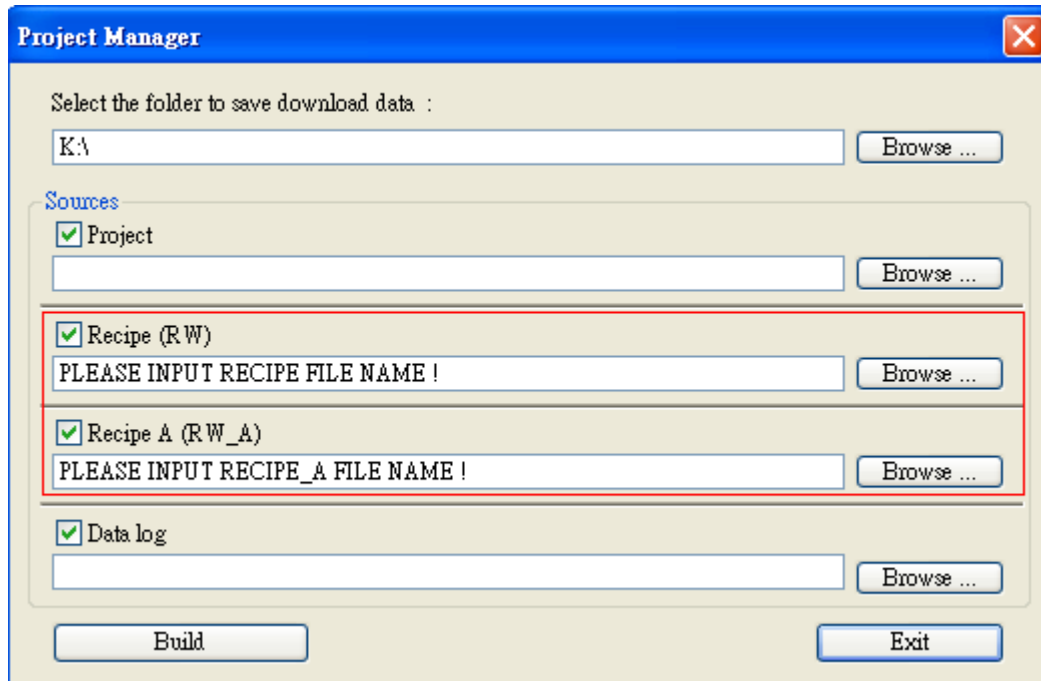
When [Reset recipe] is selected, before start download processing, the EB8000 will set all the data of [RW] and [RW_A] to 0 first.



2. Updating Recipe Data by Using CF Card or USB Stick

Click [Building Download Data for CF/USB Disk] on Project Manager.

The function is for building the download data and the settings shows as below.



[Select the folder to save download data]

Insert CF card or USB stick to PC and click [**Browse...**] to assign the file path (or directory name) and then click [**Build**] to set all contexts of the downloaded data.

Note: Save location should be the name of directory and avoid designating only root directory.

For example, both “c:\” and “f:\” are illegal names.

3. Transferring Recipe Data

Using the [Data Transfer (Trigger-based) object] to transfer Recipe Data to the appointed address, or saving the data of the designated address in [RW] and [RW_A] as well. Please refer to the [Data Transfer (Trigger-based) object] section for related information.

4. Saving Recipe Data Automatically

In order to prolong the life of HMI's flash memory, the EB8000 will save Recipe Data automatically **every minute** to avoid losing the data when the HMI shuts down. The EB8000 provides user with [LB9029: save all recipe data to machine (set ON)] system register bit function to save Recipe Data manually. The EB8000 will save Recipe Data when user set ON to [LB9029]. But when user set ON to [LB9028: reset all recipe data (set ON)], the EB8000 will clear all Recipe Date as 0.